

O HARE 21

UPCOMING BID OPPORTUNITIES SUMMER & FALL 2023

AECOM HUNT CLAYCO BOWA

AGENDA

WELCOME

O'HARE 21

WORKING AT O'HARE

PROJECT OVERVIEW

TRADE PACKAGES

REQUIREMENTS

RESOURCES

PROCUREMENT

ETHICS

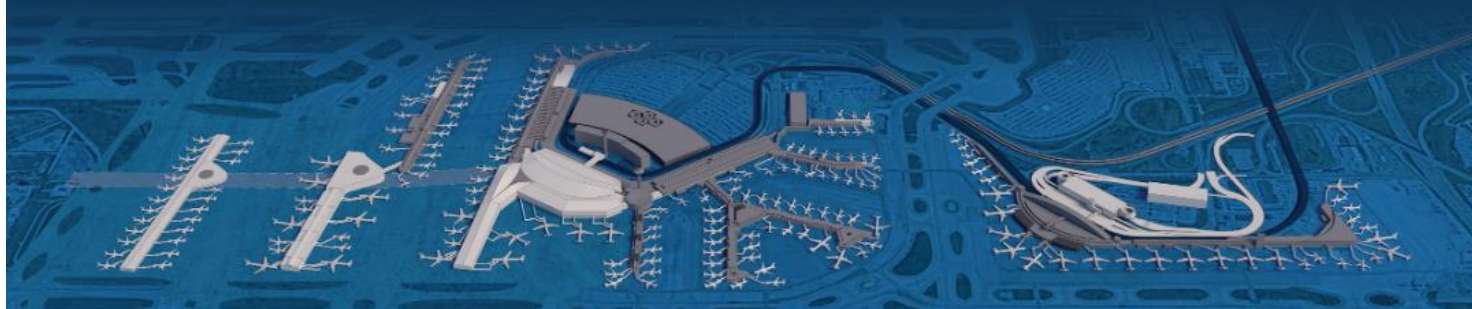
O'HARE 21

✕O HARE 21

O'HARE 21: A NEW O'HARE IS TAKING FLIGHT!

O'Hare 21 is Chicago's vision for a modern airport that will be an efficient and accessible international gateway, bringing the world to Chicago, and Chicago to the world.

Through this decade-long capital program, O'Hare will be transformed from curb to gate and meet the needs of the traveling public through the 21st century and beyond.



<https://www.ord21.com/>

O'HARE 21 - CONSTRUCTION MANAGER AT RISK

Brian Baldock
Project Manager

.....

Frank Friar
Project Manager

.....

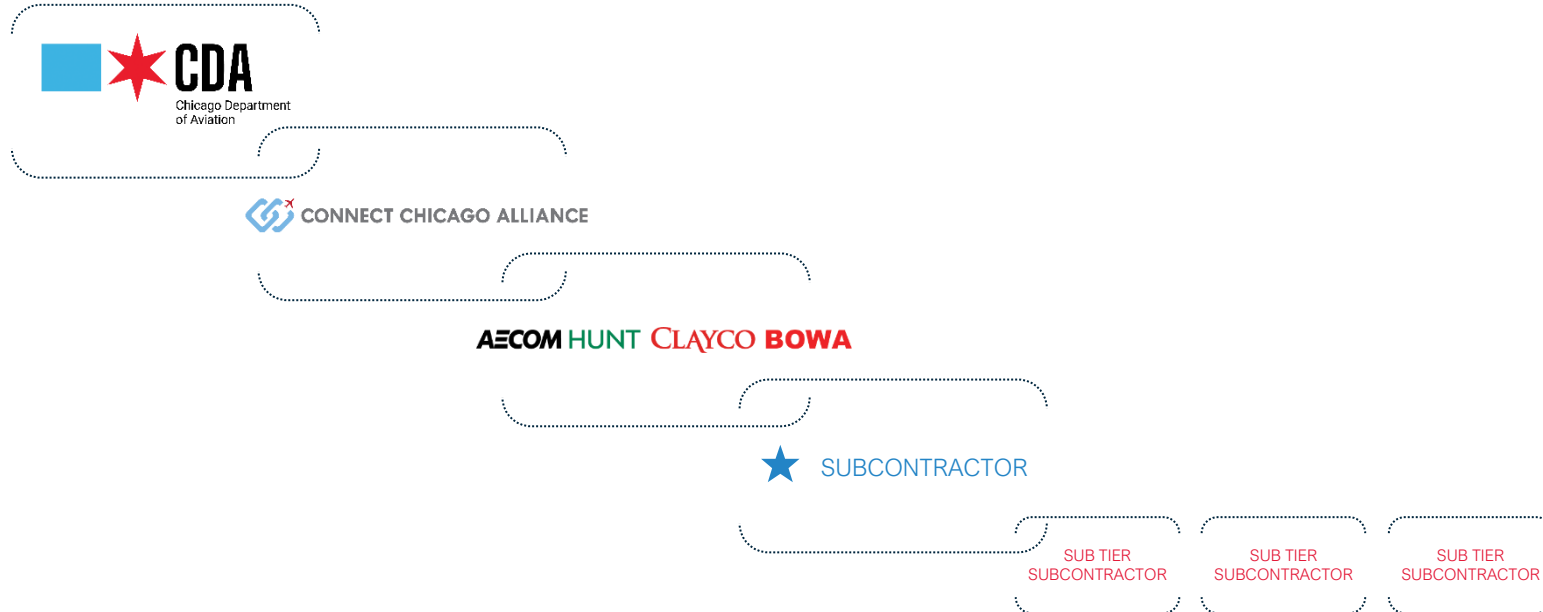
Mike Mencin
Project Manager

.....

Victor Elizondo
Project Coordinator

.....

O'HARE 21 - CONSTRUCTION MANAGER AT RISK



O'HARE 21

CHICAGO City of Chicago Department of Aviation
ACCESS CONTROL AND PHOTO ID BADGE APPLICANT

CDA

Step 1 - Application Information - To be completed by the APPLICANT

1. Application Date: _____
 2. Company Name: _____
 3. Company Type: _____
 4. Company Type: _____
 5. Last Name: _____
 6. Do you have an Assignment to this Airport? _____
 7. Motor Vehicle Information: _____
 8. Driver License Information: _____
 9. City of Birth: _____

COMPANY VEHICLE ACCESS FORM - AIRFIELD

City of Chicago Department of Aviation

CHICAGO DEPARTMENT OF AVIATION
GROUND MOTOR VEHICLE OPERATING REGULATIONS MANUAL

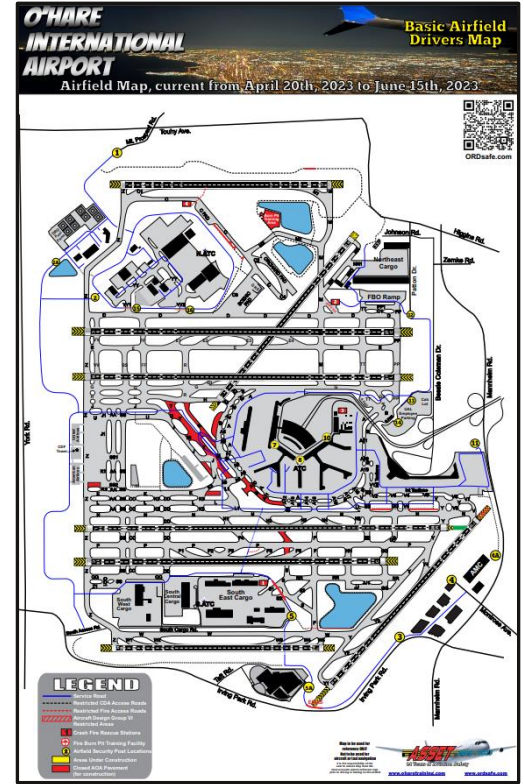
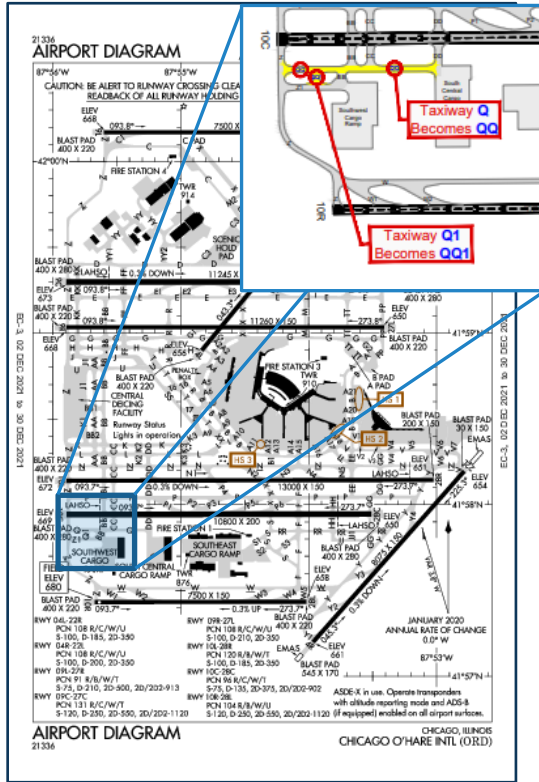
03/10/2023

CHICAGO DEPARTMENT OF AVIATION
GROUND MOTOR VEHICLE OPERATING REGULATIONS MANUAL

O'HARE and MIDWAY INTERNATIONAL AIRPORTS
REVISED APRIL 2, 2019

CDA
LOUIE L. LOHMEYER
Mayor

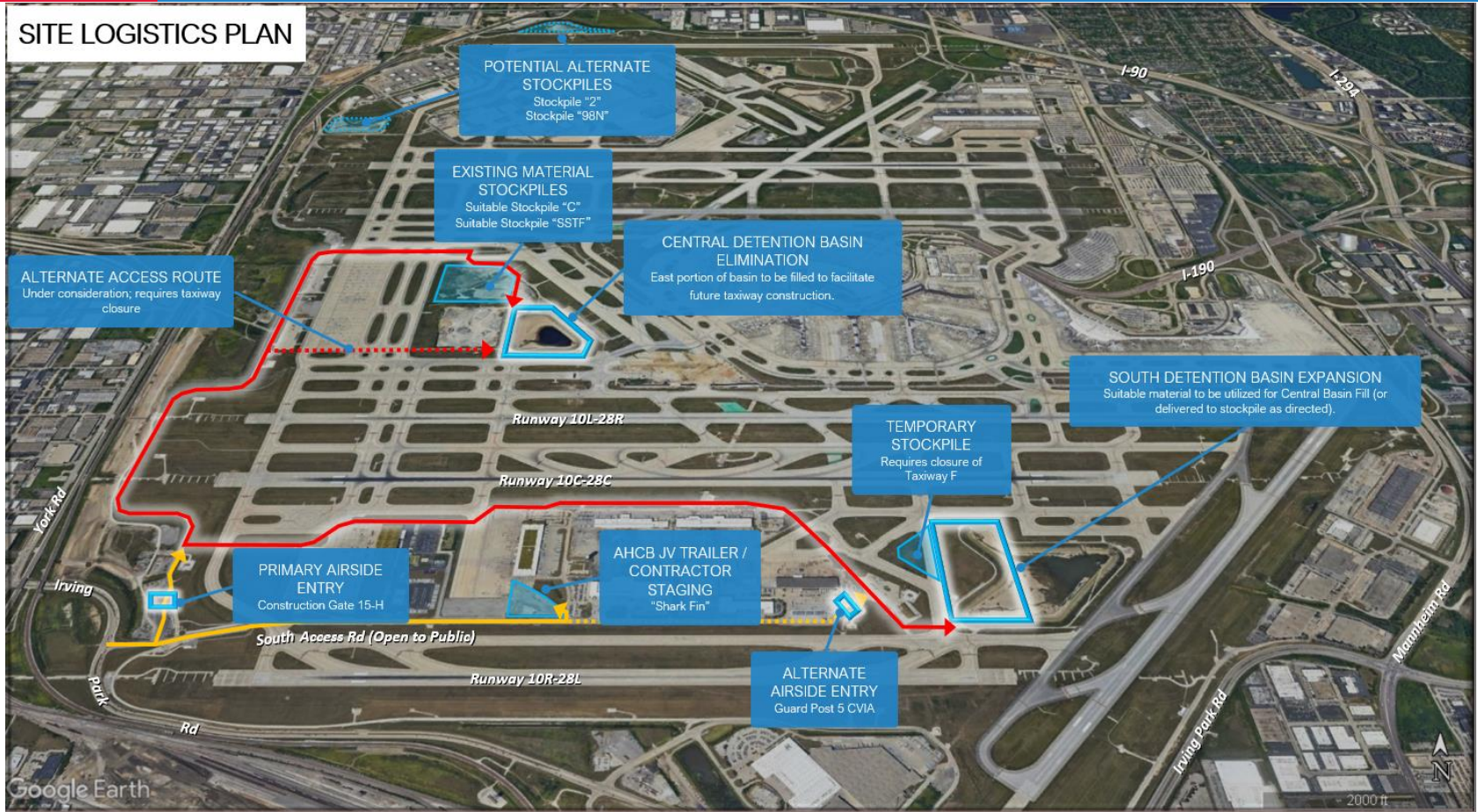
CDA
JAMES L. REESE
Commissioner



THESE PROJECTS WILL ELIMINATE THE CENTRAL DETENTION BASIN WHILE EXPANDING THE SOUTH DETENTION BASIN; WHICH ARE BOTH REQUIRED IN ORDER TO COMMENCE CONSTRUCTION OF THE TERMINAL AREA PROGRAM (TAP) SATELLITE #1 AND #2 CONCOURSES.

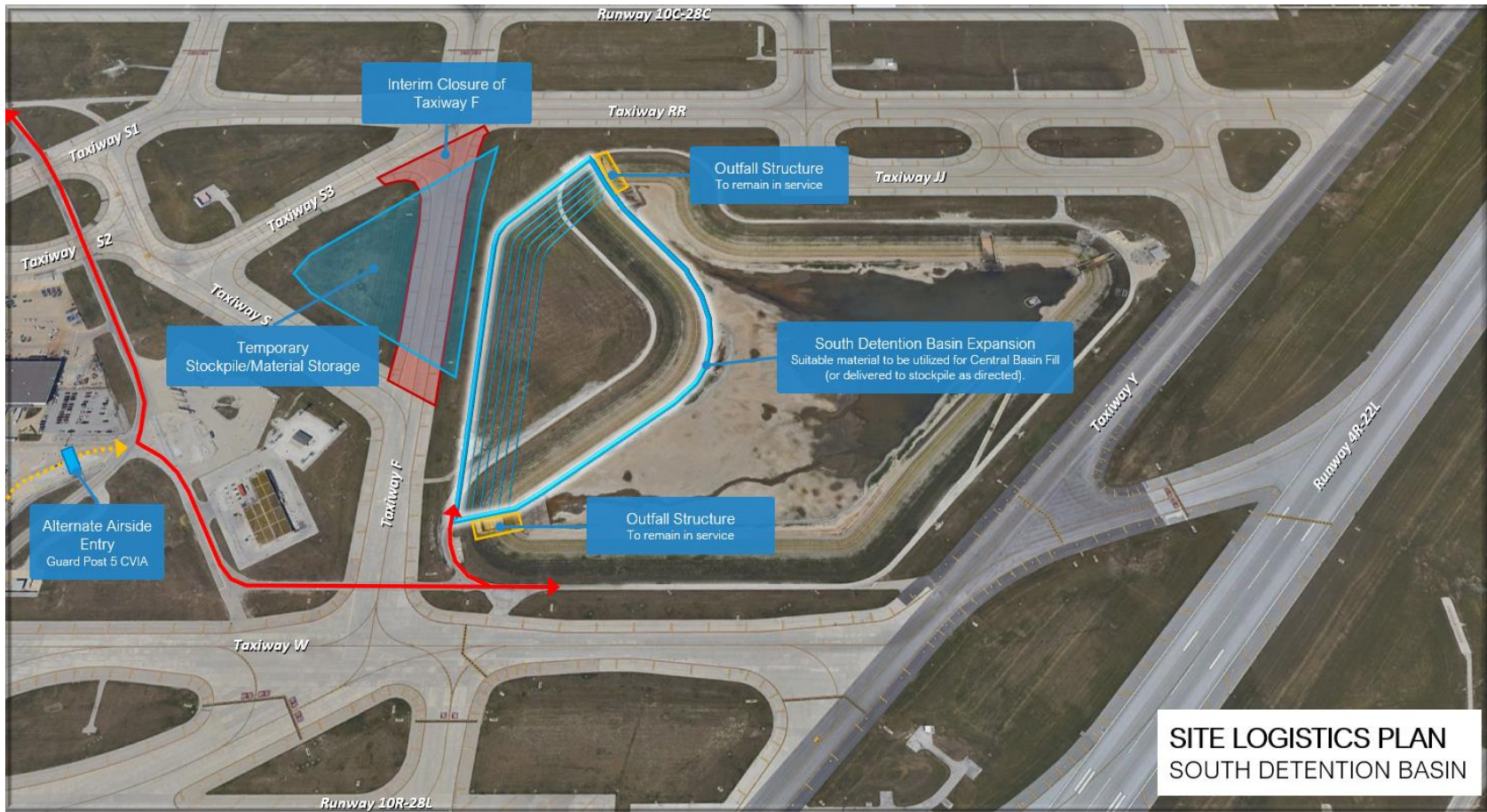


SITE LOGISTICS PLAN



SITE LOGISTICS PLAN CENTRAL DETENTION BASIN





SITE LOGISTICS PLAN
SOUTH DETENTION BASIN

TRADE PACKAGE 01 – CENTRAL DETENTION BASIN MASS GRADING

DEMOLISH INFRASTRUCTURE WITHIN THE EASTERN PORTIONS OF THE CENTRAL BASIN AND EMBANK APPROXIMATELY 200K CU YD OF LIME MODIFIED EARTHEN MATERIALS IN THIS AREA. THE SCOPE FURTHER INCLUDES AN EXTENSION OF 108" RCP (OWNER SUPPLIED) OUTFLOW PIPING AND AN EXTENSION OF THE CENTRAL BASIN PUMP STATION IN-TAKE PIPING.



- EARTHWORK
- CONCRETE CAST IN PLACE SEWER STRUCTURES
- SITE UTILITIES
- DEMOLITION
- LIME MODIFICATION
- DRAINAGE CONTROL
- QUALITY CONTROL
- FLAGGING

ENGINEER OF RECORD

HNTB
EXP

ESTIMATED VALUE

\$20 MM - \$25 MM

MAJOR TRADES

OPERATORS
LABORERS
SITE PLUMBERS
CEMENT FINISHERS
IRONWORKER

SCHEDULE

ANTICIPATED START: Q3 – 2023

DURATION: 10 MONTHS
(INCLUDING MOBILIZATION)

TRADE PACKAGE 02 – TAXIWAY FOXTROT INTERIM CLOSURE

MODIFY THE EXISTING TAXIWAY MARKINGS, SIGNAGE, AND LIGHTING TO CLOSE TAXIWAY FOXTROT BETWEEN TAXIWAYS SIERRA AND SIERRA-THREE.



- TEMPORARY SIGNAGE
- PAVEMENT MARKINGS
- ELECTRICAL LIGHT RELOCATION / DECOMMISSION
- MINOR DEMOLITION
- SITE UTILITIES
- QUALITY CONTROL
- FLAGGING

ENGINEER OF RECORD

HNTB

ESTIMATED VALUE

\$250 K - \$350 K

MAJOR TRADES

OPERATORS
LABORERS
ELECTRICIANS

SCHEDULE

ANTICIPATED START: Q3 – 2023

DURATION: 2 MONTHS
(INCLUDING MOBILIZATION)

TRADE PACKAGE 03 – SOUTH DETENTION BASIN SLURRY WALL EXPANSION

CONSTRUCT A NEW SLURRY WALL TO THE WEST OF THE EXISTING BASIN TO ALLOW FOR FUTURE EXCAVATION AND EXPANSION OF THE SOUTH DETENTION BASIN.



- BENTONITE SLURRY WALL
- EARTHWORK
- EROSION CONTROL
- QUALITY CONTROL
- FLAGGING

ENGINEER OF RECORD

HNTB

ESTIMATED VALUE

\$1.5 MM - \$2 MM

MAJOR TRADES

OPERATORS
LABORERS

SCHEDULE

ANTICIPATED START: Q3 – 2023

DURATION: 3 MONTHS
(INCLUDING MOBILIZATION)

TRADE PACKAGE 04 – SOUTH DETENTION BASIN GROUT CURTAIN EXPANSION

INJECT CEMENTITIOUS GROUT INTO THE FRACTURED BEDROCK TO THE WEST OF THE EXISTING BASIN TO ALLOW FOR FUTURE EXCAVATION AND EXPANSION OF THE SOUTH DETENTION BASIN.



- SUBSURFACE DRILLING
- EARTHWORK
- GROUT INJECTION
- EROSION CONTROL
- QUALITY CONTROL
- FLAGGING

ENGINEER OF RECORD

HNTB

ESTIMATED VALUE

\$2 MM - \$2.5 MM

MAJOR TRADES

OPERATORS
LABORERS
CEMENT FINISHERS

SCHEDULE

ANTICIPATED START: Q3 – 2023

DURATION: 3 MONTHS
(INCLUDING MOBILIZATION)

BID PACKAGE 02 – WINTER 2023

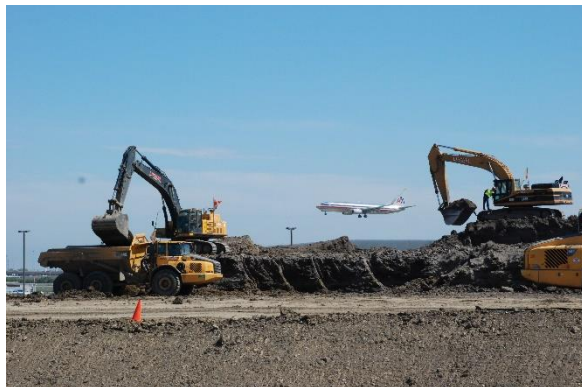
TRADE PACKAGE 05

SOUTH DETENTION
BASIN EXCAVATION



TRADE PACKAGE 06

CENTRAL DETENTION
BASIN MASS GRADING
– PHASE II



TRADE PACKAGE 07

EAST FILL TAXIWAY



REQUIREMENTS – OWNER CONTROLLED INSURANCE PROGRAM (OCIP)

ALLIANT - OWNER CONTROLLED INSURANCE PROGRAM (OCIP)



Alliant

City of Chicago
O'Hare 21 OCIP



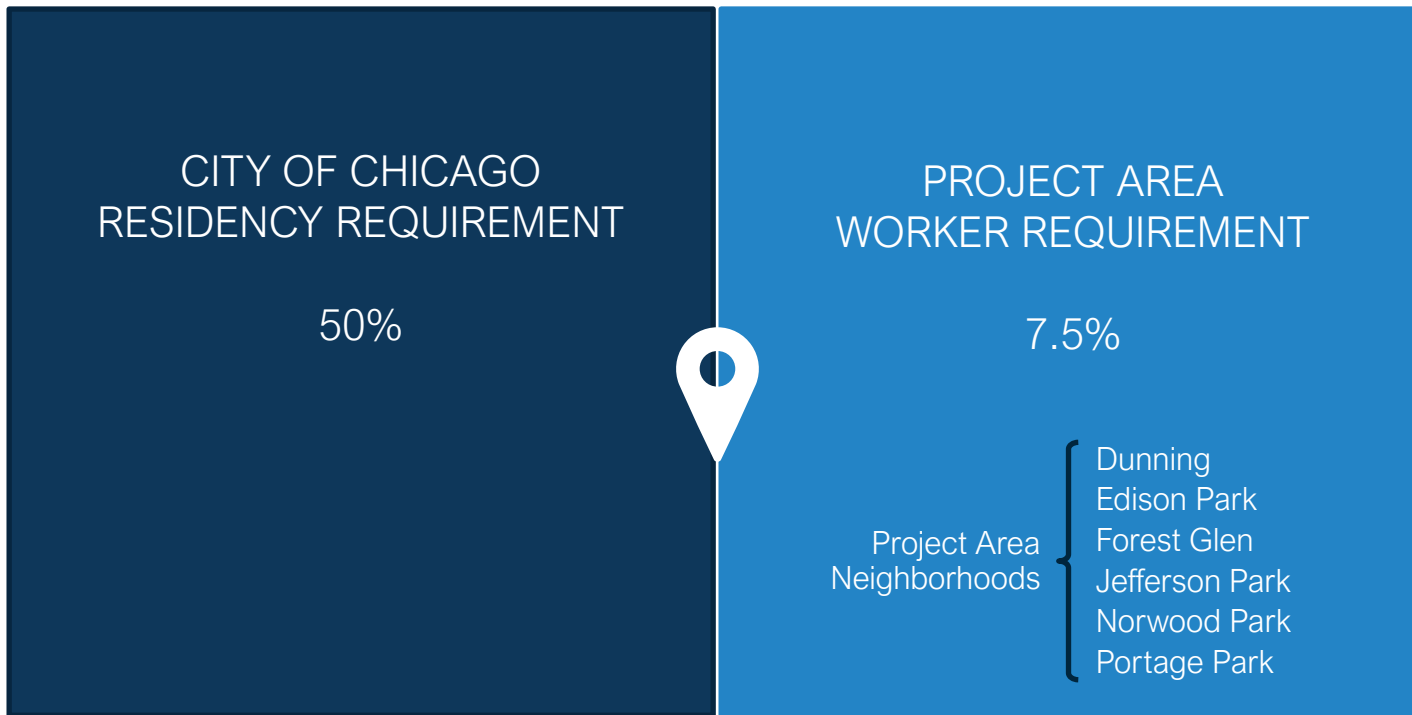
REQUIREMENTS - MBE & WBE PARTICIPATION

PROJECT SPECIFIC GOALS

* TENTATIVE PARTICIPATION

Trade Package 01: Central Detention Basin Mass Grading	MBE 31%	WBE 8%
Trade Package 02: Taxiway Foxtrot Interim Closure	MBE 27%	WBE 5%
Trade Package 03: South Detention Basin Slurry Wall Expansion	MBE 15%	WBE 2%
Trade Package 04: South Detention Basin Grout Curtain Expansion	MBE 17%	WBE 2%

REQUIREMENTS - RESIDENCY



RESOURCES - CITY RESIDENCY / PROJECT AREA



Revolution Workshop | 708-529-6288 | www.revolutionworkshop.org



Chicago Women in Trades | 312-942-1444 | www.cwit.org



HACIA U | 312-575-0389 | www.haciaworks.org/hacia-u/



Cook County Workforce Partnership | 312-603-0200 | www.chicookworks.org



HIRE360 | 312-575-2511 | www.hire360chicago.com



ECCSC | 708-512-4140 | www.eccsc.org

RESOURCES – AHCB GUIDE

AECOM HUNT CLAYCO BOWA

AHCB GUIDE

TRADE PACKAGE

— O'HARE 21 AT O'HARE INTERNATIONAL AIRPORT —

★★★★

✶ O'HARE 21 TERMINAL 5 LANDSIDE & PARKING IMPROVEMENTS 12/22

CHANGE MANAGEMENT

CHANGE ORDER REQUEST - PROPOSAL

A Change Order Request – Proposal must include the following detail and support.

Scope

- Detailed description of work to be performed

Schedule Impact

- Schedule analysis describing how the change order scope impacts the current schedule
- Narrative describing the negative impact of the delay on the critical path of the Subcontractor's schedule of its Work and state the number of days requested

Labor

- Labor Classification - must be as noted in Subcontract Agreement
- Hours (ST, OT, DT)
- Rates (ST, OT, DT) - must be as noted in Subcontract Agreement
- Markup – not allowed as Subcontract Agreement labor rates are inclusive of overhead, profit, fringes, small tools, etc.

Equipment

- Vendor / Equipment Type / Description
- Quantity
- Unit
- Unit Rate – Backup required (Equipment Watch, KBB, Invoice, Quote)
- Applicable taxes
- Markup - 10% overhead and 5% profit allowable

Material

- Vendor / Supplier
- Invoice #
- Quantity
- Unit Rate – Backup required (Invoice, Quote)
- Applicable taxes
- Markup - 10% overhead and 5% profit allowable

Sub Tier Subcontractor(s)

- Sub tier Subcontractor Name
- Invoice #
- Participation Type (Non, MBE, WBE, Supplier)
- Explanation required if contract participation goals not met
- Markup – the total markup on each sub tier Subcontractor may not exceed 22%

Each sub tier Subcontractor must submit a Proposal Cost Summary including all detail and backup supporting their scope of work

- If contract labor rates are not used, the sub tier Subcontractor must provide a payroll register (rate, fringes, taxes) to support proposed labor rates. 10% overhead and 5% profit are allowable
- Sub tier Subcontractor Markup - 10% overhead and 5% profit allowable on equipment, material, and non-loaded labor rates

Any MBE or WBE sub tier Subcontractor not included in the original bid/contract, must provide:

- Schedule C
- Certification Letter

Unit Rates

- Contract Item # or Change Order #
- Unit Description – must be as noted in Subcontract Agreement
- Quantity
- Unit – must be as noted in Subcontract Agreement
- Unit Price – must be as noted in Subcontract Agreement
- Markup – not allowed as Unit Pricing rates are inclusive of markup

15

ACCOUNTING

ACCOUNTING CALENDAR

The Accounting Calendar contains the monthly open draw dates for submission of payment applications in Textura. An email invitation from Textura will be sent to the Subcontractor when the draw is opened. The draw will remain open for five (5) business days. Submission of payment applications are not allowed after the draw closes.

Full or partial payment may be held due to expired insurance, unapproved bond riders, certified payroll issues, notice of lien(s) or other legal reasons.

Attachment 20 – Accounting Calendar 2023

PAYMENT APPLICATION PROCESS

- ✓ **Initial Submission Only:** The approved Schedule of Values must be updated into Textura prior to the initial Payment Application.
- ✓ **Submission:** Following receipt of the Textura email invitation, the Subcontractor must submit a draft payment application or "Pencil Copy". If adjustments are required from AHCB, the payment application will be rejected for revision. The payment application must then be resubmitted in Textura.

Review / Approval: The payment application is forwarded for process through the Program Manager and Owner departments. Additional revisions may be required prior to final approval.

Payment: The Subcontractor payment will be provided through ACH within seven (7) days of payment received from the City. The Subcontractor is required to provide sub tier Subcontractor payments within seven (7) days of receipt of payment.

```

graph LR
    A[PAYMENT APPLICATION SUBMISSION] --> B[PAYMENT APPLICATION REVIEW / APPROVAL]
    B --> C[PAYMENT TO JV FROM CITY]
    C --> D[PAYMENT TO SUBCONTRACTOR FROM JV]
    
```

45 - 90 DAYS

✶ O'HARE 21 AHCB GUIDE – TRADE PACKAGE 12

RESOURCES – WWW.AHCJV.COM

AECOM HUNT CLAYCO BOWA

ABOUT PROJECTS COMMUNITY DEVELOPMENT EVENTS WORK WITH US RESOURCES

*O*HARE 21

AVIATION LEARNING SERIES PRESENTATIONS

- Session 1: Understanding the AHCB JV Contract
- Session 2: How to Bid an AHCB JV Project
- Session 3: First Time Prime Contractor – Sub Tier Management
- Session 4: AHCB JV Change Order Management
- Session 5: Keys to a Successful Project – Preconstruction

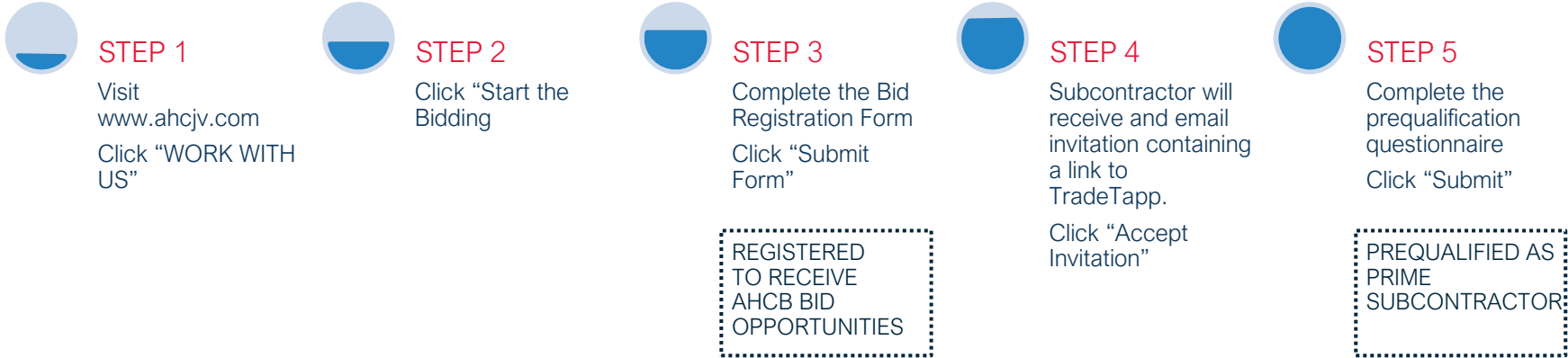
COMPLIANCE DOCUMENTATION SAMPLES

- Schedule C MBE WBE Letter of Intent to Perform as a Subcontractor to the Prime Contractor SAMPLE
- Schedule C MBE WBE Letter of Intent to Perform as a 2nd Tier Subcontractor to the Prime Contractor SAMPLE
- Schedule D Compliance Plan Regarding MBE WBE Utilization Affidavit of Prime Contractor SAMPLE

DPS RESOURCE GUIDES

- MBE & WBE Compliance
- Incentives & Programs

PROCUREMENT – REGISTRATION / PREQUALIFICATION



PROCUREMENT - INCENTIVES

COMMITMENT REGARDING BUSINESS ENTERPRISES OWNED BY PEOPLE WITH DISABILITIES (BEPD)

BID INCENTIVE FOR ALTERNATIVELY POWERED VEHICLES

CITY-BASED BUSINESSES (CHICAGO BUSINESS PREFERENCE)

BID INCENTIVE FOR VETERAN OWNED SMALL LOCAL BUSINESSES AND ELIGIBLE JOINT VENTURES

BID INCENTIVE FOR UTILIZATION OF VETERAN-OWNED SUBCONTRACTORS

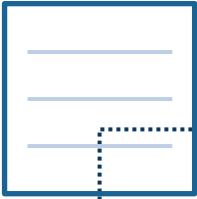
PROJECT AREA SUBCONTRACTOR BID PREFERENCE

MENTORING PROGRAM BID PREFERENCE (SECTION 2-92-535 OF THE CHICAGO MUNICIPAL CODE)

COMMITMENT TO ENCOURAGE DIVERSE WORKFORCE AND MANAGEMENT (2-92-407)

AWARD CRITERIA DETERMINATION

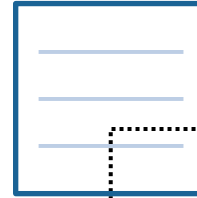
PROCUREMENT – UPCOMING BID PACKAGES



BID PACKAGE 1

- TP 01: Central Detention Basin Mass Grading
- TP 02: Taxiway Foxtrot Interim Closure
- TP 03: South Detention Basin Slurry Wall Expansion
- TP 04: South Detention Basin Grout Curtain Expansion

JUNE 2023

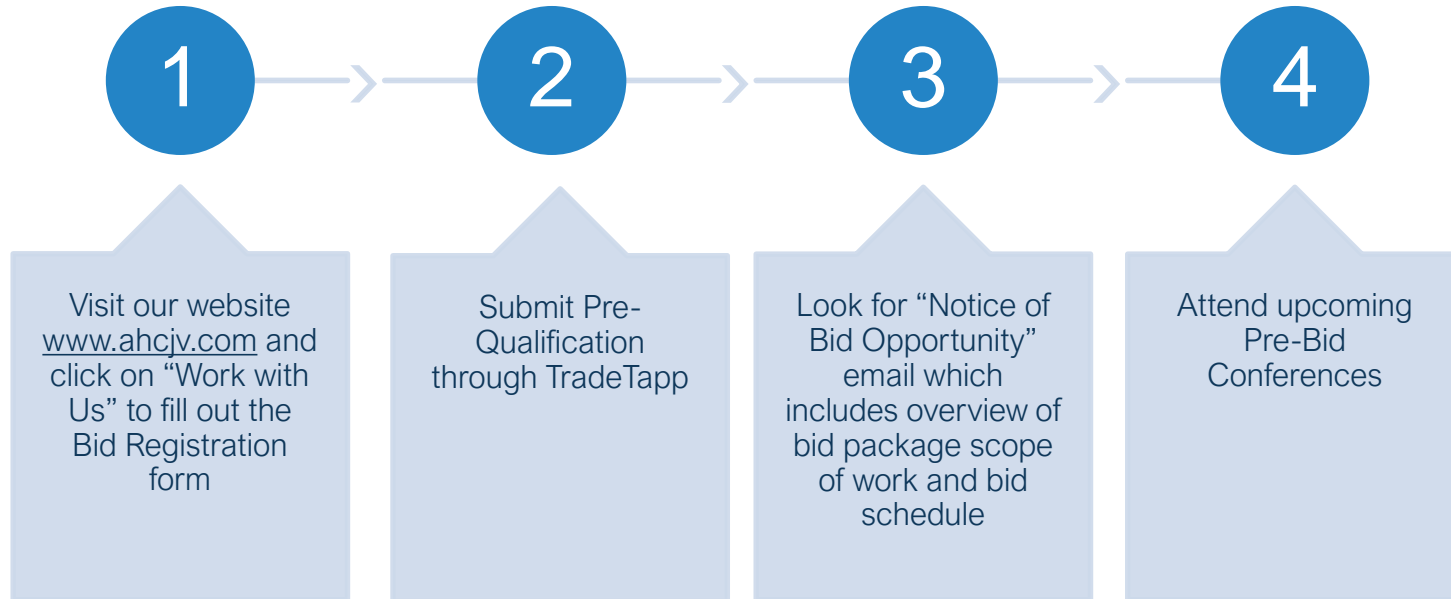


BID PACKAGE 2

- TP 05: South Detention Basin Excavation
- TP 06: Central Detention Basin Mass Grading – Phase II
- TP 07: East Fill Taxiway

Q4 2023

PROCUREMENT – NEXT STEPS



ETHICS





AECOM

Safeguarding a workplace culture built on ethics and integrity


AECOM ETHICS HOTLINE
Ethics & Compliance

Each of us is personally responsible for ensuring that we and our colleagues perform our work with integrity and in compliance with applicable law. If you have an honest and sincere belief regarding any unethical activity such as fraud or any other wrongdoing or impropriety, please contact your supervisor, AECOM human resources or in-house counsel, or the AECOM Ethics Hotline.

 **1-888-299-9602**
aecom.ethicspoint.com 

AECOM's Ethics Hotline –operated by NAVEX Global on our behalf – is available 24/7 in several languages for you to ask questions or report honest and sincere concerns. Calls to AECOM's Ethics Hotline may be made anonymously where permitted by applicable law. Your concerns will be documented and confidentially forwarded to our Ethics & Compliance team for handling.

AECOM takes its responsibility as an ethical company seriously and does not tolerate acts of retaliation against anyone who makes an honest and sincere report of a possible violation of law or of AECOM's Code of Conduct or policies.



CHICAGO

I WANT TO ▾ PROGRAMS AND INITIATIVES ▾ GOVERNMENT ▾ ABOUT ▾

Ethics
The Board of Ethics enhances public confidence in the administration of City government

A wide-angle photograph of an airport tarmac at sunset. The sky is a mix of orange, yellow, and light blue. In the background, several United Airlines aircraft are parked at gates. The tarmac is dark blue, and the sun is low on the horizon, creating a bright glow.

THANK YOU



WEBSITE

www.ahcjv.com



EMAIL

basins@ahcjv.com



QUESTIONS

outreach@ahcjv.com